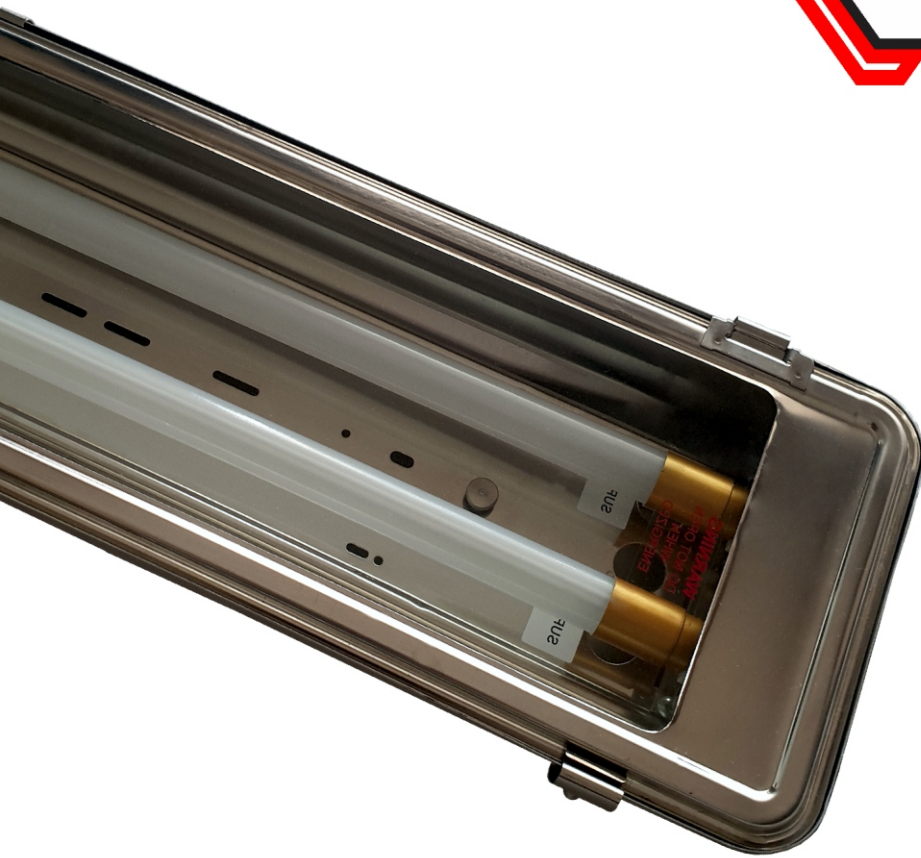




**NORDLAND
LIGHTING®**



PETROCHEMICAL • HAZARDOUS • LINEAR

N50-LT Exn Linear

Zone 2, 21, 22

OVERVIEW

The N50 LT LED Exn is a Zone 2/21/22 hazardous area luminaire designed for use in highly corrosive explosive environments. This specialized fitting constructed from 304 stainless steel or marine grade 316 stainless steel with a 4mm clear tempered glass lens has been tried and tested and is widely used as a light of choice within

the Oil and gas, petrochemical, marine and other hazardous area applications. This robust IP65/IK08 fitting is manufactured in a 1200mm 18W and 1200mm 36W version. The LED tubes for this fitting can be supplied in standard lengths or in a proprietary Nordland length. The advantage of the proprietary

Nordland length is that a fitting cannot inadvertently be fitted with an LED tube not certified for the application. The use of a replaceable geartray provides the user with a fitting that is futureproofed for longevity hence saving long term cost and providing for swift and simple maintenance.

APPLICATIONS



INDOOR
AREAS



OUTDOOR
AREAS



INDUSTRIAL
ENVIRONMENTS



HAZARDOUS
AREAS



MINING AND
SURFACE AREAS



OIL AND GAS

PERFORMANCE

Model Name	N50LT Exn	N50LT Exn
	4ft(1200mm)	4ft(1200mm)
Wattages	18W	36W
Nominal Lumens	2160lm	4320lm
System Lumens	1800lm	3600lm
System efficacy lm/W	100lm/W	100lm/W

LED AND OPTICS

Optics	120°
Expected lifetime	>30000
L70 rating	>30000 @25C, L70 B10
Colour Rendering Index RA	>80
Colour Temperature	4500K

ELECTRICAL AND OPERATING

Driver	AC to DC Converter
Operating temperature	-20°C to +40°C
Input voltage/Frequency	110 - 240V VAC, 50/60Hz
Input Current	0,082 @18W; 0,164 @36W
Power Factor	>0.9
Surge Protection	Ex approved Inline Fuse

PRODUCT MATERIALS AND INSTALLATION

Housing	Grade 304 Stainless Steel . Grade 316 Stainless available on request
Lens	4mm Clear Tempered Glass
Gasket	Single extrusion Rubber Silicone cemented onto frame
Finish	Pickled and passivated Stainless Steel
Ingress Protection	IP65
IK Rating	IK08
Mounting Options	Wall, Ceiling, Bracket and Pole mounting
Spigot size	N/A

CERTIFICATIONS. STANDARDS AND WARRANTIES EX

Zone 2	EX Exe nA IIC T4 Gc	Complies to SANS 60598-1
Zone 21/22	Ex tb IIIC T135°C Db	Complies to SANS 60079-0

DIMENSIONS

body has a 5 year warranty and the lamps have a 1 year warranty

**DIMENSIONS AND PACKAGING**

Model	N50LT 4ft	N50LT 4ft
Wattage	18W	36W
Dimensions mm (LxWxH)	1370 x 219 x 135	1370 x 219 x 135
Weight Kg (Unit / packaged)	7kg / 7,2kg	7kg / 7,2kg

ACCESSORIES

Pole clamp Bracket

PHOTOMETRIC PERFORMANCE:

As photometric data and IES files differ according to the selected optics and wattages, these are available on request

LIGHTING DESIGN SERVICES:

On request we can do lighting design for your application.

WARRANTY:

Lamp - 1 year

Luminaire - 5 years

52 Fransen str, Chamdor
PO Box 2465
Noordheuwel Ext 4
1756
South Africa

T: 010 442 2809

E: sales@nordland.co.za

W: www.nordland-lighting.com



Nordland reserves the right to change any specification or design without prior notice.